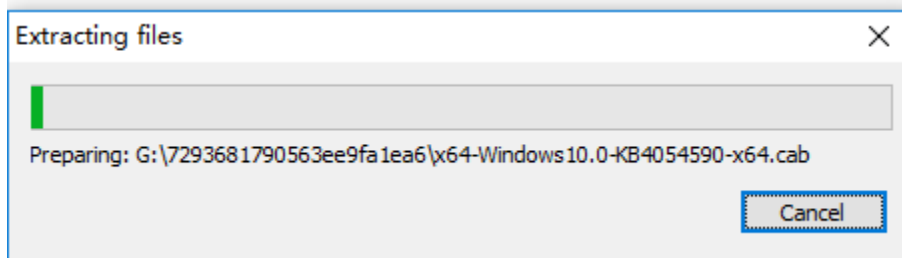


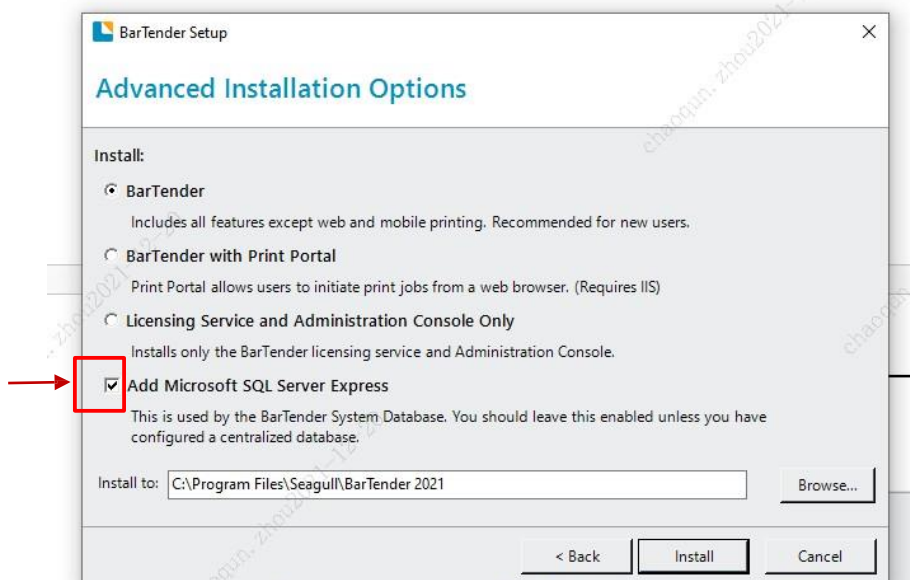
1. Click to start the software BT 2021_R7



2. Select the two options below



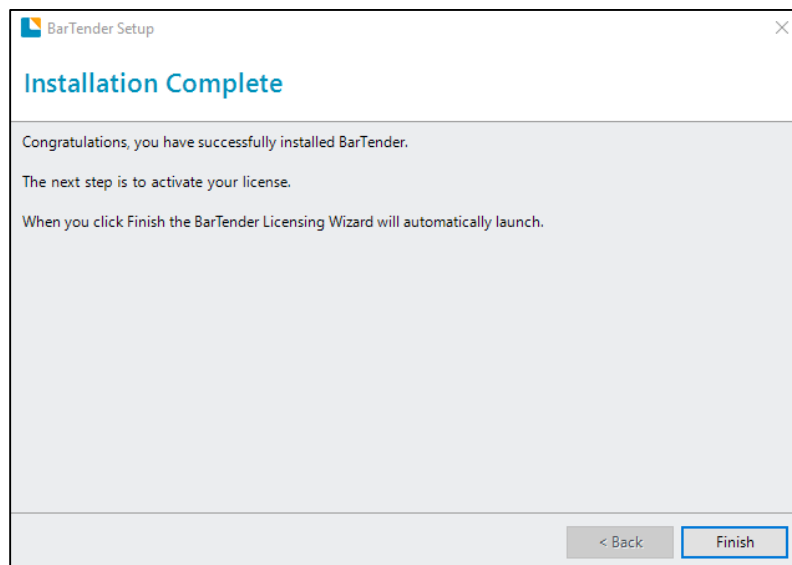
3. Cancel the option what the arrow points to



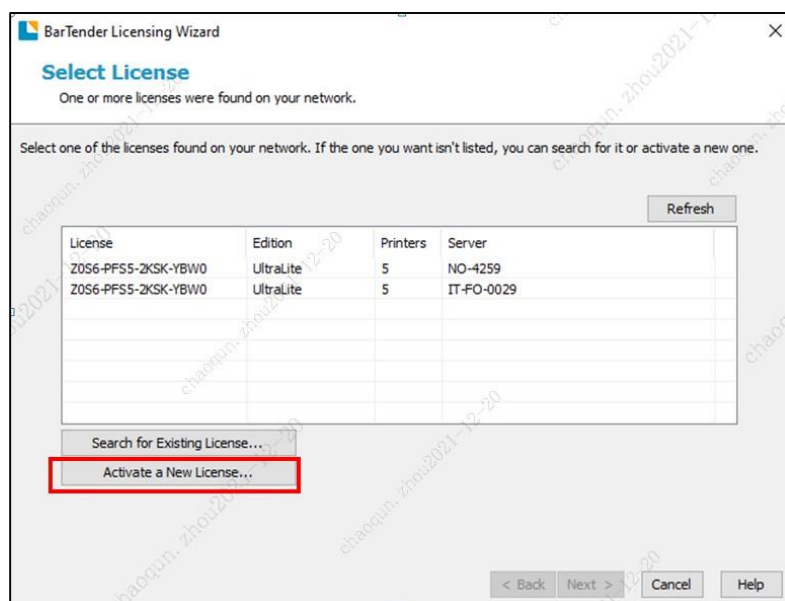
- Click 'install' to continue the installation.



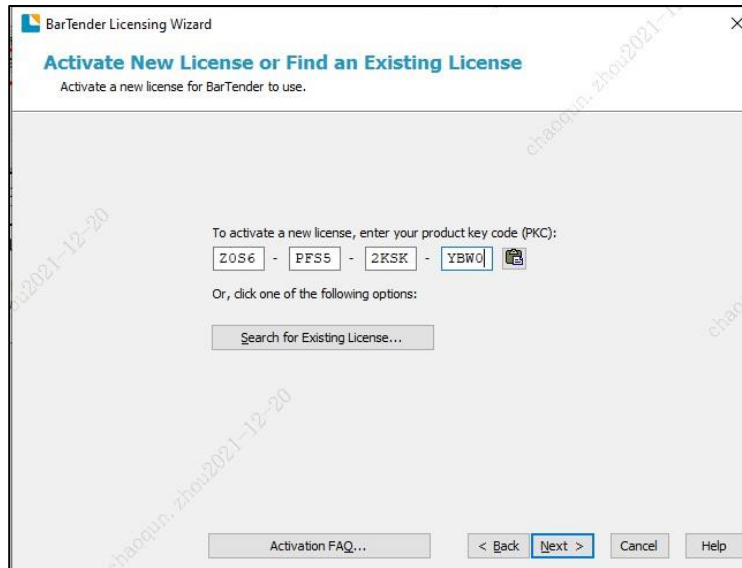
- Select 'finish' as the following display.



- Select the option 'Activate a New License' and click 'Next'.



7. Input the key code: **Z0YV-MMKN-3PK3-N9L3** and click 'NEXT' to continue activating the software.



BarTender Licensing Wizard

Activate New License or Find an Existing License
Activate a new license for BarTender to use.

To activate a new license, enter your product key code (PKC):

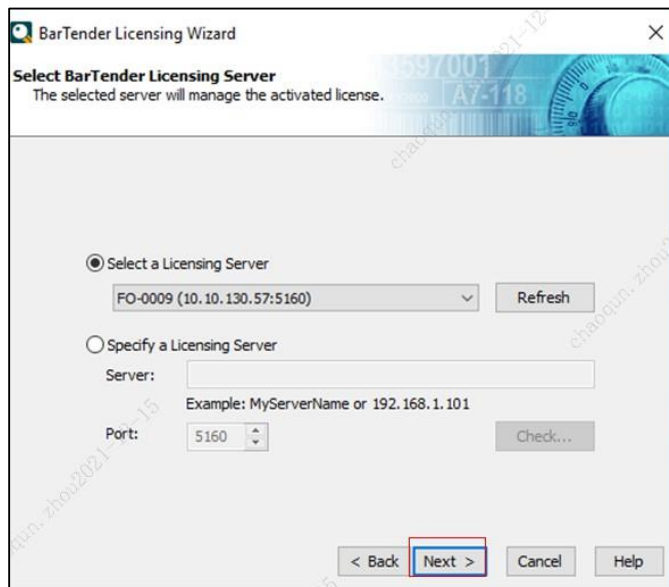
Z0S6 - PFSS - 2KSK - YBW0

Or, click one of the following options:

Search for Existing License...

Activation FAQ... < Back **Next >** Cancel Help

8. Click 'Next' as the following display



BarTender Licensing Wizard

Select BarTender Licensing Server
The selected server will manage the activated license.

☒ Select a Licensing Server

FO-0009 (10.10.130.57:5160) Refresh

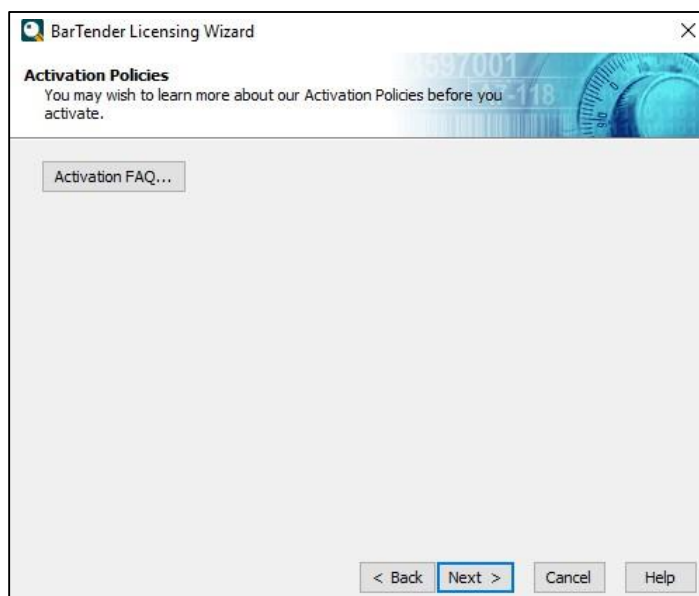
☐ Specify a Licensing Server

Server:

Example: MyServerName or 192.168.1.101

Port: 5160 Check...

< Back **Next >** Cancel Help



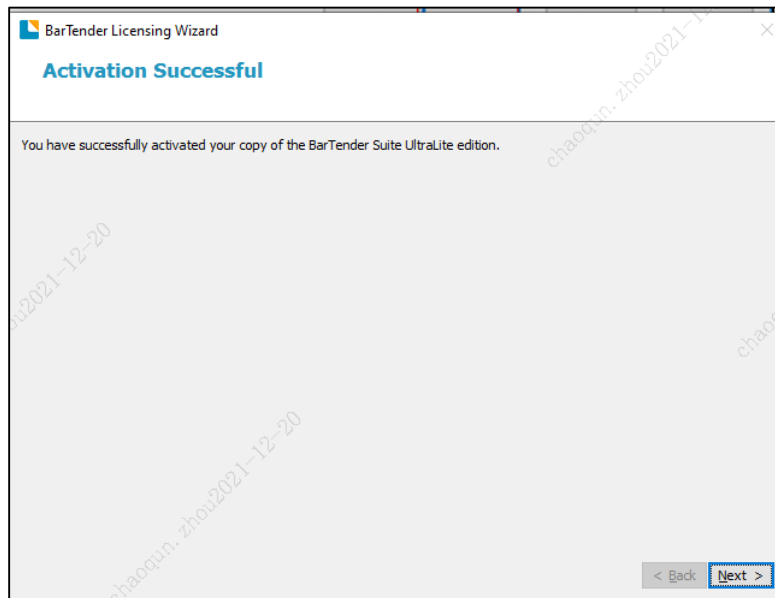
BarTender Licensing Wizard

Activation Policies
You may wish to learn more about our Activation Policies before you activate.

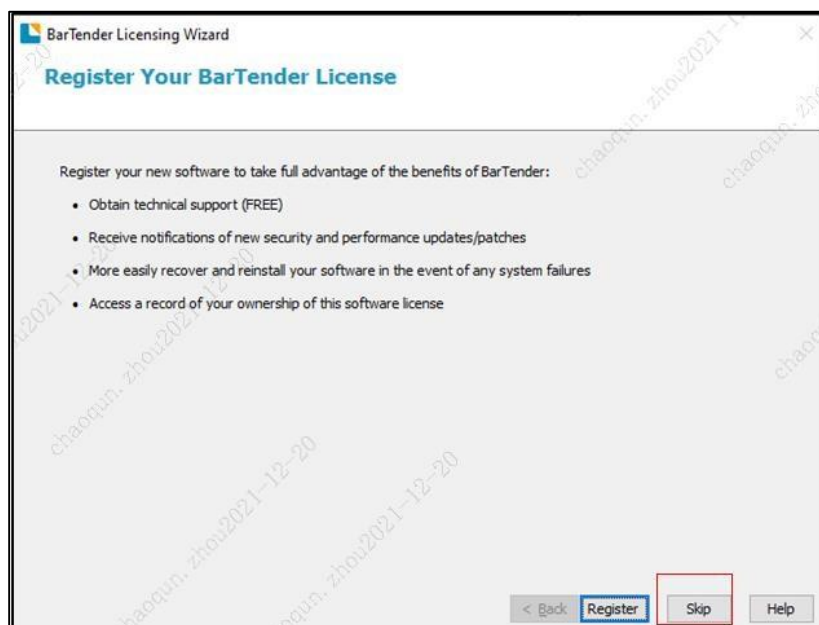
Activation FAQ...

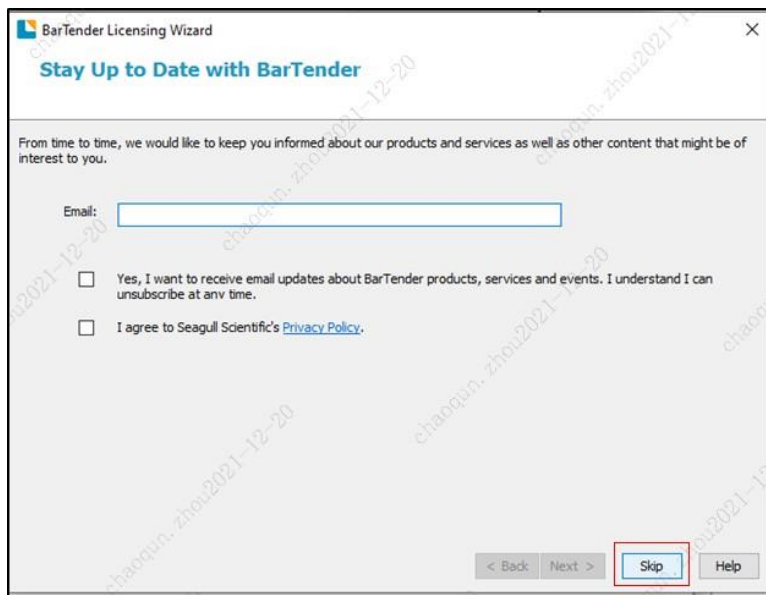
< Back **Next >** Cancel Help

9. Click 'Next' after the activation successful screen is displayed

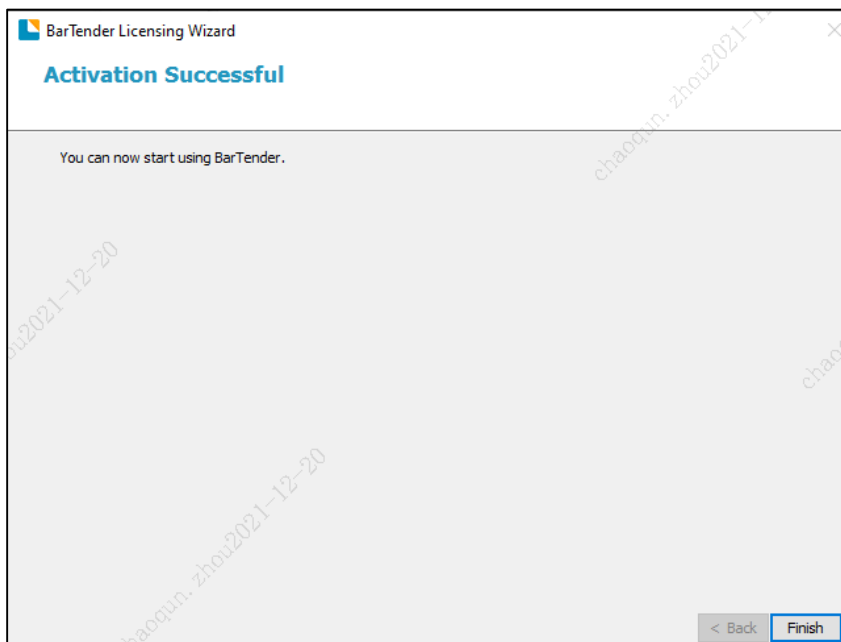


10. Click 'Skip' as the following screen is displayed





11. Finally, click 'Finish' to finish installation.



12. Begin to use the software 'Bartender Designer' on your computer.

